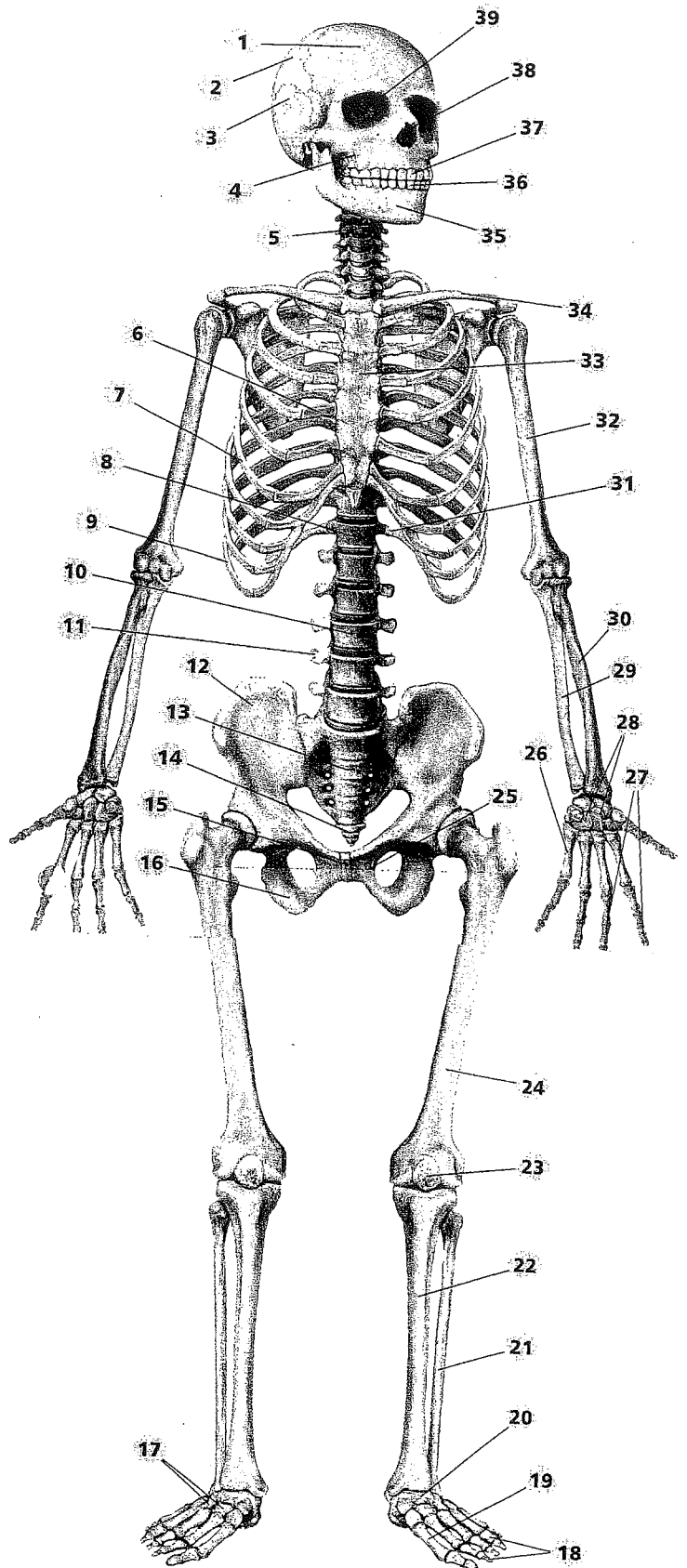


KNES 11: Skeletal System Anterior View Labeling

Name: Key

Look at the picture on this sheet and label each bone correctly:

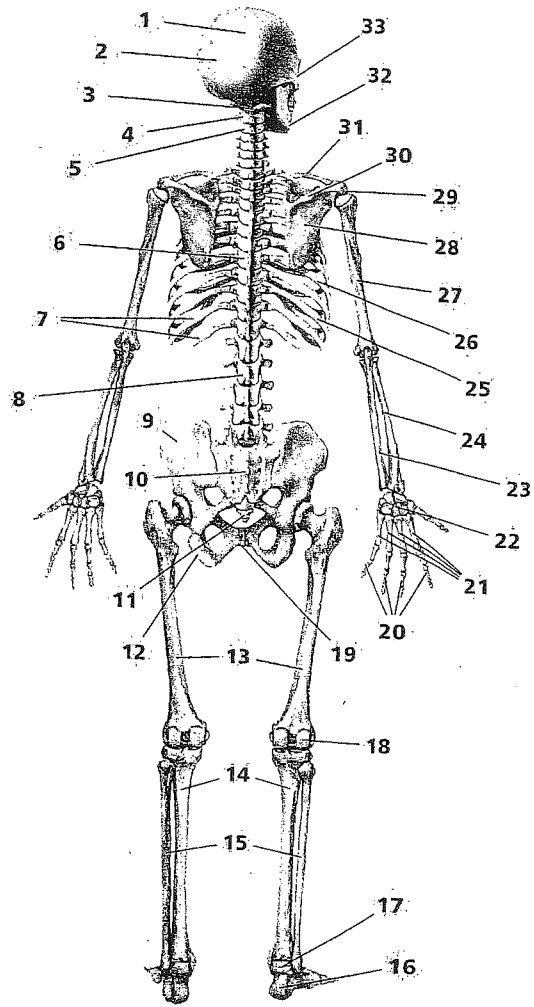
1. frontal bone
2. Parietal bone
3. Temporal bone
4. maxilla
5. Cervical vertebra
- \* 6. costal cartilage
7. true rib
8. thoracic vertebra
9. false rib
10. Lumbar vertebra
- \* 11. transverse process
12. Ilium
13. Sacrum
14. Coccyx
- \* 15. pubic symphysis
16. Ischium
17. tarsals
18. phalanges
19. metatarsals
- \* 20. talus
21. fibula
22. tibia
23. patella



24. Femur
- \* 25. inferior pubic ramus
26. metacarpals
27. phalanges
28. carpals
29. ulna
30. radius
- \* 31. 12<sup>th</sup> rib (floating)
32. humerus
33. sternum
34. clavicle
35. mandible
- \* 36. lower teeth
- \* 37. upper teeth
- \* 38. ant. nasal aperture.
39. orbit

Look at the picture on this sheet and label each bone correctly:

1. parietal bone
2. occipital bone
3. atlas (C1)
4. axis (C2)
5. Cervical vertebra
6. thoracic vertebra
7. floating ribs (11 & 12)
8. Lumbar vertebra
9. Ilium
10. Sacrum
11. coccyx
- \* 12. ischial tuberosity
13. Femur
14. Tibia
15. Fibula
16. Calcaneus
17. Talus
- \* 18. femoral condyle
- \* 19. pubic symphysis
20. Phalanges
21. Metacarpals
22. Carpals
23. Ulna



24. radius
25. false rib
26. true rib
27. humerus
28. scapula
29. acromion
30. spine of scapula
31. clavicle
32. mandible
33. zygomatic bone

Look at the picture on this sheet and label each bone correctly:

1. sagittal suture \*

2. lambda \*

3. temporal bone

4. lambdoid suture \*

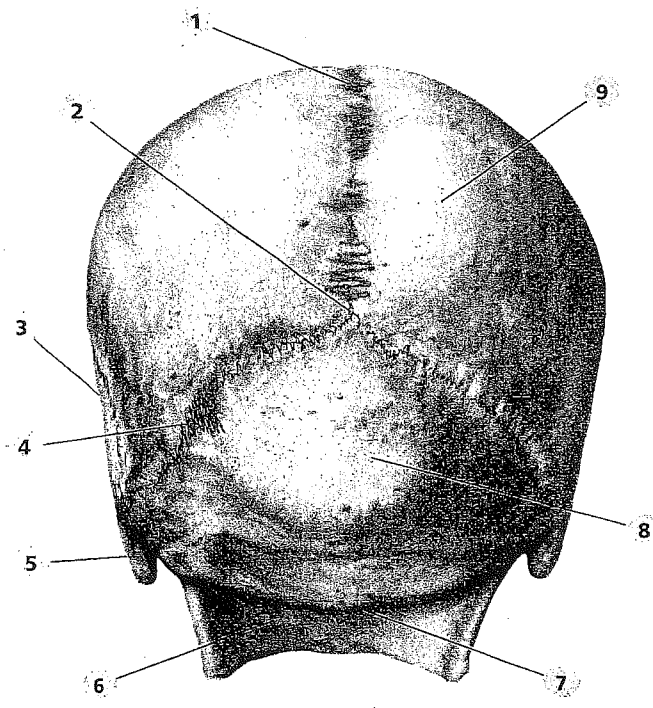
5. mastoid process

7. external occipital protuberance \*

8. occipital bone

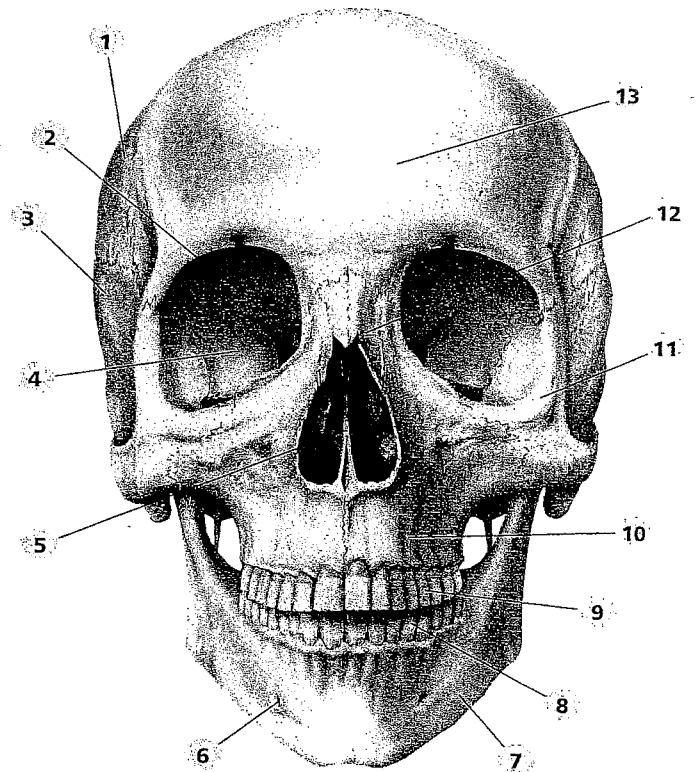
9. parietal bone

6. mandible



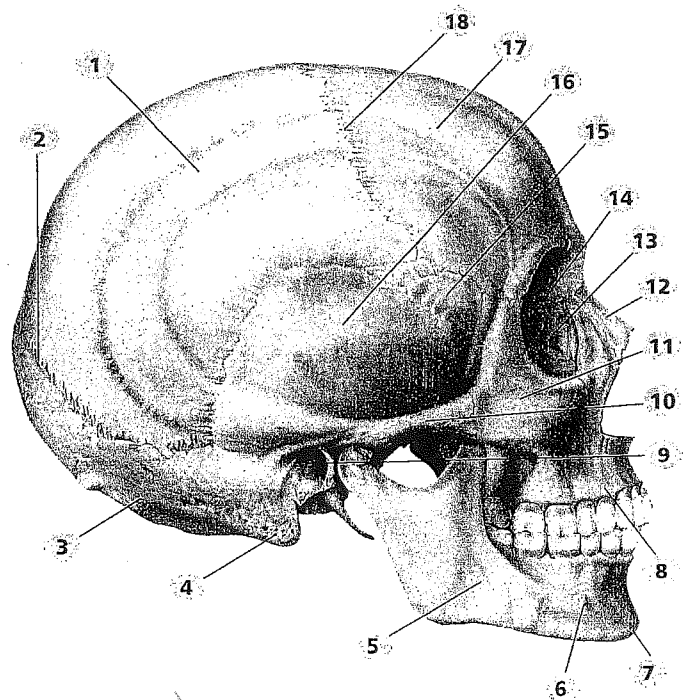
Look at the picture on this sheet and label each bone correctly:

1. Parietal bone
2. Sphenoid (lesser wing)
3. Temporal
4. Sphenoid (greater)
5. Nasal septum
6. mental foramen
7. mandible
8. teeth
9. teeth
10. maxilla
11. Zygomatic
12. Nasal
13. frontal



Look at the picture on this sheet and label each bone correctly:

1. Parietal bone
2. Lamboid suture
3. occipital bone
4. mastoid process
5. mandible
6. mental foramen
7. mental protuberance
8. maxilla
9. external auditory meatus
10. Zygomatic process
11. Zygomatic bone
12. Nasal bone
13. lacrimal bone
14. ethmoid bone
15. sphenoid bone (greater wings)
16. temporal bone
17. frontal bone
18. coronal suture



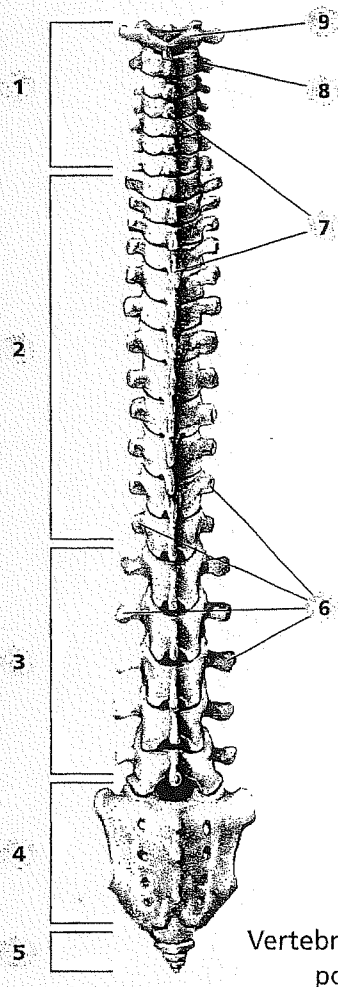




Look at the picture on this sheet and label each bone correctly:

- (#1-5 are the same in both pictures)

1. Cervical vertebrae (C1-C7)
2. Thoracic vertebrae (T1-T12)
3. Lumbar vertebrae (L1-L5)
4. Sacrum (5)
5. Coccyx (4)
6. Transverse processes (follow transverse plane)
7. Spinous processes (medial line)
8. Axis (C2)
9. Atlas (C1)



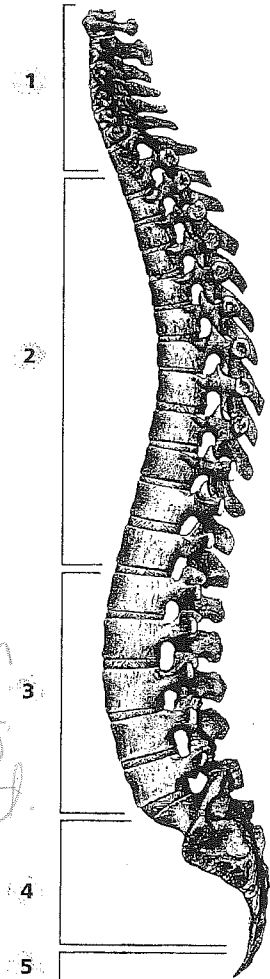
Vertebral Column—  
posterior view

\* intervertebral  
disks  
- flexible  
- cartilage  
- resist  
excessive  
movements  
- thickness  
varies,  
depending  
on location

\* form articulations  
to permit movement.

↳ ligaments in  
front/behind.

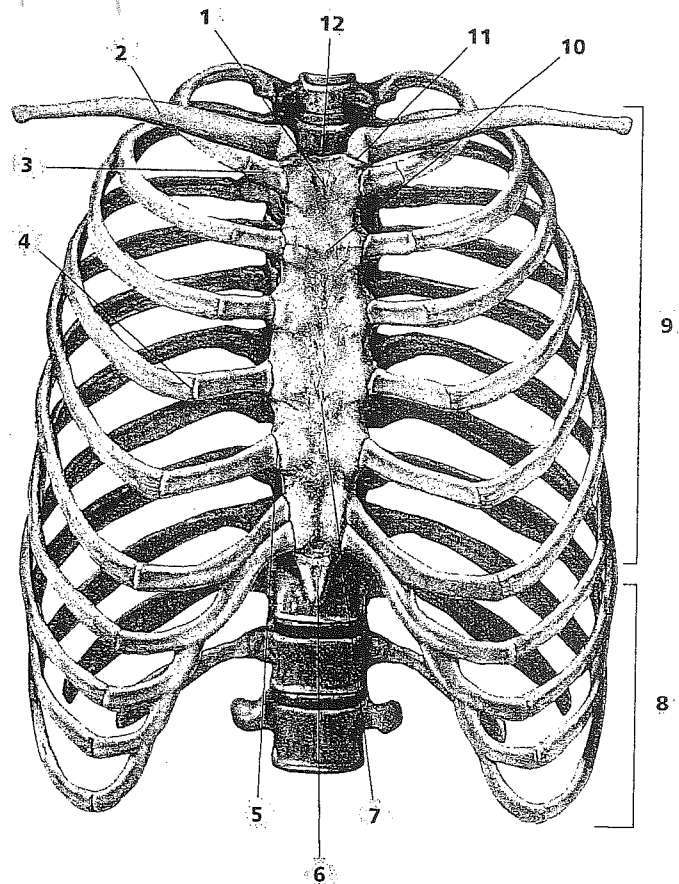
Vertebral Column—  
lateral view





Look at the picture on this sheet and label each bone correctly:

1. manubrium (upper, broad part of sternum)
2. clavicle
3. costal cartilage - connect ribs to sternum
4. costochondral joint
5. sternocostal joint
6. Xiphoid process
7. Sternum (body)
8. False Ribs (#8-10)
9. True ribs (#1-7)
10. \_\_\_\_\_
11. sternoclavicular joint
12. suprasternal notch (palpate)



Look at the picture on this sheet and label each bone correctly:

1. T1 (Thoracic vertebrae)
2. true ribs (1-7)
3. T12
4. floating ribs (11-12)
5. false ribs (8-10)

